

Test Case-23

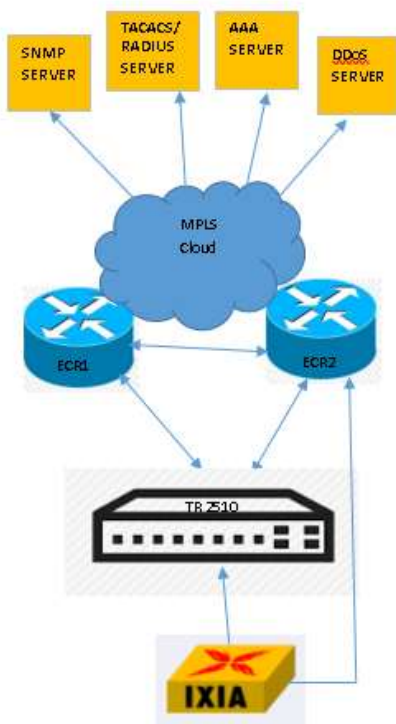
Test Name: RJIL-IP-QA-DS-SYS-023

Test Objective: To check switch should support jumbo packets >9000 bytes

Test Configuration:

system mtu 9000

Test Set up (Including Pre requisites): Switch, ECR1, ECR2, IXIA



Procedure: Connect switch to IXIA and ECR1, ECR2

Action: Traffic to be send by IXIA towards switch

Response: Switch should pass the jumbo frame to IXIA

1

Traffic to be send by IXIA towards switch with jumpro ame size

1

Switch should pass the jumbo frame to IXIA

Expected Result: Ping response should be with jumbo frames more than 9000 bytes

Actual Result:

```
GUICHECK# ping 10.64.89.225 -l 9150
```

```
Reply from 10.64.89.225 : bytes=9150 time=1ms TTL=128
```

```
Reply from 10.64.89.225 : bytes=9150 time=1ms TTL=128
```

```
Reply from 10.64.89.225 : bytes=9150 time=1ms TTL=128
```

```
Reply from 10.64.89.225 : bytes=9150 time=1ms TTL=128
```

```
--- 10.64.89.225 ping statistics ---
```

```
4 packets transmitted, 4 packets received, 0% packet loss
```

```
round-trip min/avg/max = 1/1/1 ms
```

```
GUICHECK#ping6 2405:200:1410:1010::81 -l 9150
```

```
Reply from 2405:200:1410:1010 : bytes=9150 time=1ms TTL=128
```

```
Reply from 2405:200:1410:1010 : bytes=9150 time=1ms TTL=128
```

```
Reply from 2405:200:1410:1010 : bytes=9150 time=1ms TTL=128
```

```
Reply from 2405:200:1410:1010 : bytes=9150 time=1ms TTL=128
```

```
--- 2405:200:1410:1010::81 ping statistics ---
```

```
4 packets transmitted, 4 packets received, 0% packet loss
```

```
round-trip min/avg/max = 1/1/1 ms
```